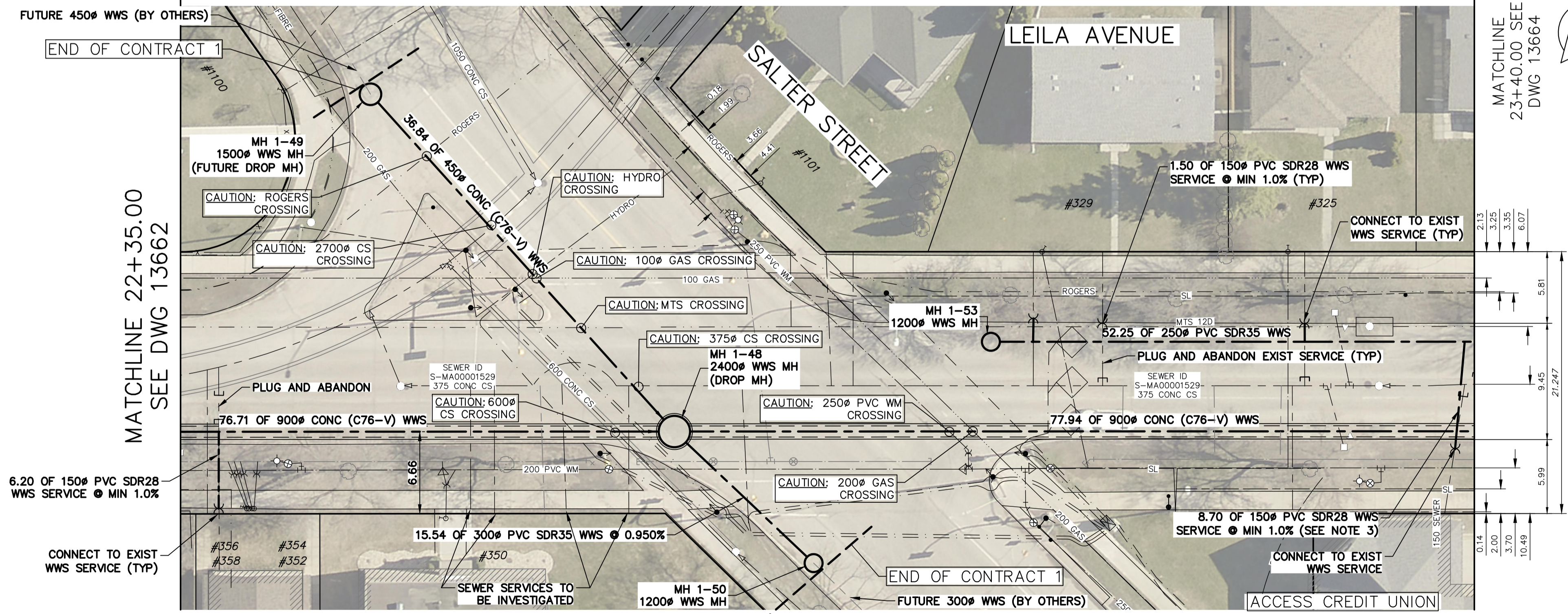


- NOTES:**
- WHEN INSTALLING PROPOSED WASTEWATER SEWERS ON LEILA AVE TAKE CAUTION WHEN CROSSING EXISTING RESIDENTIAL WATER SERVICES.
 - CONTRACTOR SHALL VERIFY ELEVATION OF EXISTING SEWER SERVICES AT PROPOSED DOWNSTREAM CONNECTION LOCATIONS PRIOR TO INSTALLATION OF COLLECTOR WWS TO ALLOW FOR CHANGES OF GRADE TO THE COLLECTOR WWS.
 - WHEN CROSSING THE NEW WWS TRUNK ON LEILA AVE WITH NEW WWS SERVICES (ALL SOUTH WWS SERVICES BETWEEN SALTER ST. AND AIKINS ST.) TO CONNECT TO THE COLLECTOR WWS, TAKE CAUTION NOT TO CROSS SHAFT LOCATIONS FOR THE NEW WWS TRUNK TO MITIGATE THE RISK OF POTENTIAL SERVICES SETTLEMENT.

NOTE: CHAINAGES SHOWN ALONG S RL OF LEILA AVENUE



SEWER SERVICE INFORMATION					
ADDRESS	STATUS	SIZE (mm)	COORDINATES AT JUNCTION	COORDINATES AT PROPERTY	REMARKS
#310 LEILA AVE	ACTIVE	150	N=5534132.83 E=634921.86	N=5534124.05 E=634915.96	NONE
#325 LEILA AVE	ACTIVE	150	N=5534138.26 E=634910.06	N=5534148.11 E=634914.68	NONE
#310 LEILA AVE	ABAND	UNKN	N=5534139.06 E=634908.35	UNKN	NONE
#310 LEILA AVE	ABAND	UNKN	N=5534141.38 E=634903.40	UNKN	NONE
#310 LEILA AVE	ABAND	UNKN	N=5534144.51 E=634896.72	UNKN	NONE
#329 LEILA AVE	UNKN	UNKN	N=5534145.25 E=634895.23	UNKN	NONE
#329 LEILA AVE	ACTIVE	150	N=5534147.60 E=634890.12	UNKN	NONE
#310 LEILA AVE	UNKN	UNKN	N=5534141.38 E=634883.54	UNKN	NONE
#1101 SALTER ST	UNKN	UNKN	N=5534153.81 E=634876.88	UNKN	NONE
#1101 SALTER ST	UNKN	UNKN	N=5534154.55 E=634875.28	UNKN	NONE
#350 LEILA AVE	UNKN	UNKN	N=5534157.63 E=634868.71	UNKN	NONE
#350 LEILA AVE	UNKN	UNKN	N=5534161.53 E=634860.39	UNKN	NONE
#350 LEILA AVE	UNKN	UNKN	N=5534163.95 E=634855.53	UNKN	NONE
#350 LEILA AVE	UNKN	UNKN	N=5534165.99 E=634854.25	UNKN	NONE
#350 LEILA AVE	UNKN	UNKN	N=5534166.16 E=634850.87	UNKN	NONE
#350 LEILA AVE	UNKN	UNKN	N=5534166.98 E=634848.76	UNKN	NONE
#354 LEILA AVE	ACTIVE	250	N=5534176.97 E=634830.87	UNKN	NONE
#356 LEILA AVE	UNKN	UNKN	N=5534177.21 E=634829.96	UNKN	NONE

SEWER JUNCTION INFORMATION FROM SEWER VIDEO INSPECTION SEWER ID S-MH00001529		
DISTANCE FROM MH ID S-MH00001315	DIAMETER	CLOCK
110.8	250	1
111.8	250	1
124.8	375	2
134.8	450	2

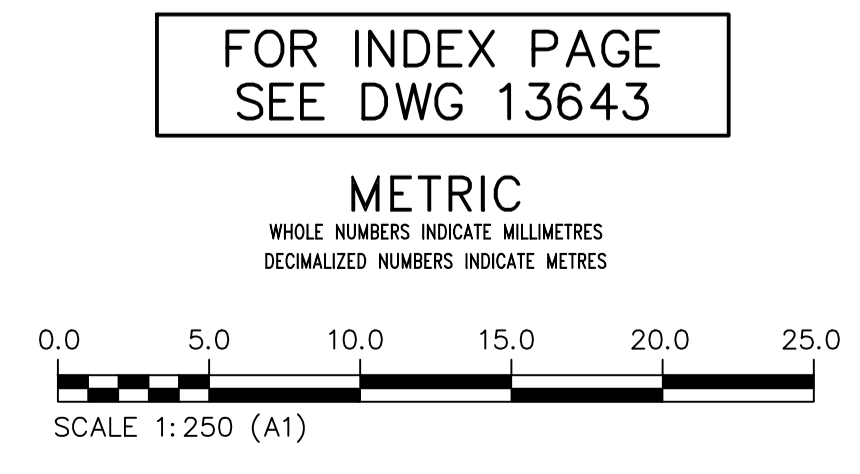
SEWER JUNCTION INFORMATION FROM SEWER VIDEO INSPECTION SEWER ID S-MH00001529		
DISTANCE FROM MH ID S-MH00001282	DIAMETER	CLOCK
2.4	150	1
4.2	150	11
6.0	150	1
7.1	150	11
7.9	150	11
13.4	150	11
20.8	150	11
22.4	150	1
28.1	150	1
35.3	150	11
42.7	150	1
44.5	150	11
51.7	150	11
60.9	150	11
66.3	150	11
68.2	150	1
71.8	150	11
73.7	250	11

SEWER JUNCTION INFORMATION FROM SEWER VIDEO INSPECTION SEWER ID S-MH00001530		
DISTANCE FROM MH ID S-MH00001281	DIAMETER	CLOCK
74.1	150	11



ENGINEER'S SEAL
 ORIGINAL DRAWING SEALED BY:
 M.A. IANKOVA-DEDOVA
 2026/03/11
 CONSULTANT DRAWING NUMBER
 C1-22

THE CITY OF WINNIPEG
 WATER AND WASTE DEPARTMENT
 ENGINEERING SERVICES DIVISION
 ARMSTRONG SEWER RELIEF WORKS
 CONTRACT 1
 LEILA AVENUE
 18.9 E OF POWERS STREET TO
 13.1 E OF SALTER STREET
 SHEET 22 OF 46
 CITY DRAWING NUMBER
 13663



WARNING
 IF POWER EQUIPMENT OR EXPLOSIVES ARE TO BE USED FOR EXCAVATION ON THIS PROJECT THE CONTRACTOR MUST:
 1) NOTIFY THE GAS COMPANY OF THE PROPOSED LOCATION OF EXCAVATION.
 2) TAKE PRECAUTION TO AVOID DAMAGE TO GAS COMPANY INSTALLATIONS.
 SEE PROVINCIAL REGULATION 210/72 FOR DETAILS

LOCATION APPROVED UNDERGROUND STRUCTURES
 SUPV. U/G STRUCTURES COMMITTEE DATE
 NOTE:
 LOCATION OF UNDERGROUND STRUCTURES AS SHOWN ARE BASED ON THE BEST INFORMATION AVAILABLE BUT NO GUARANTEE IS GIVEN THAT ALL EXISTING UTILITIES ARE SHOWN OR THAT THE GIVEN LOCATIONS ARE EXACT. CONFIRMATION OF EXISTENCE AND EXACT LOCATION OF ALL SERVICES MUST BE OBTAINED FROM THE INDIVIDUAL UTILITIES BEFORE PROCEEDING WITH CONSTRUCTION.

VERTICAL DATUM: CGVD28 (HT2.0 Geoid)	
HORIZONTAL DATUM: NAD83 (June 1990), Zone 14	
NO.	REVISIONS
0	ISSUED FOR CONSTRUCTION

DESIGNED BY	MID	CHECKED BY	TLE
DRAWN BY	GEL	APPROVED BY	RBO
SCALE:	HORIZONTAL 1:250	RELEASED FOR CONSTRUCTION	DUANE BAKER
DATE	2026/03/10	DATE	2026/03/12